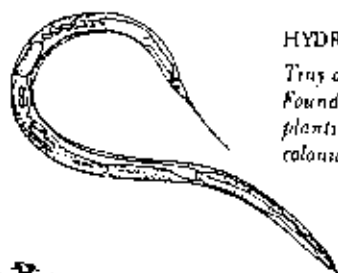


## Tolerant Water Bugs continued

**NEMATODES [4]**  
Thread like worm less than 1cm long, tapering to a fine point at one end. Moves in a whip like fashion.



**HYDRA [4]**  
Tiny animals with tentacles. Found attached to rocks or plants. Often found in colonies.



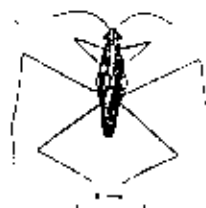
**BEE TLE LARVAE (COLEOPTERA) [4]**  
Segmented insect larvae (never found in cases). Very active, aggressive predators. Found in a wide variety of forms and habitats.



**BEE TLES — (COLEOPTERA) [5]**  
Insects with hard front wings. Folded side by side along the centre of the back. Found swimming in or on the water at all levels or on plants.



**TRUE BUGS (HEMIPTERA) [4]**  
Front wings are folded, soft and overlapping leaving a small triangle on the back. Found among aquatic plants on water surface, or swimming freely at all levels of slow flowing water.



## Very Tolerant Water Bugs

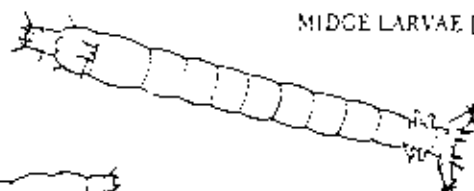
**AQUATIC EARTHWORM [1]**  
Segmented worms opaque or flesh coloured with rounded ends and no suckers.



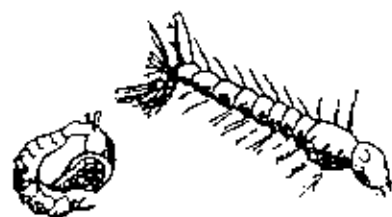
**FLY LARVAE [2]**



**MIDGE LARVAE [2]**



**BLOOD WORM [1] (RED MIDGE LARVAE)**



**MOSQUITO LARVAE [2]**

**FLY LARVAE —**  
Cylindrical creatures with no legs, or stumpy, unjointed legs. Found in all sorts of aquatic habitats, swimming, on rocks, or on the bottom, in soft muddy tubes.

### References

- Lakes and Rivers of Australia by V Serventy & R Raymond. Sunbun Books 1980
- Australian Freshwater Life by W D Williams, 2nd edition. Murray Darling Basin Commission 1982
- Aquatic Life in Fresh Water by H. M. Smith. Cambridge University Press 1965
- Freshwater Invertebrates by Ralph Miller. Gould League of Victoria 1983

### Acknowledgements

- Illustrations were provided by W D Williams (Uni Adelaide), Murray Darling Basin Commission, Rob Welan (Water Board) and Alec Ellis.
- The Guide was written by Fiona Van Dort (Water Board), Geoffrey Smith (Water Board), Bruce Chessman (Water Board), Rafael Clemke (Water Board), and David Salt (CSIRO)