

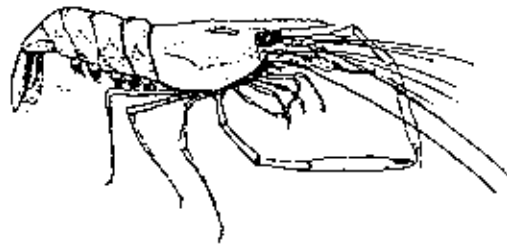


Soft bodied animal.
Enclosed in two hinged shells.
Found on a stable sandy or muddy bottom.

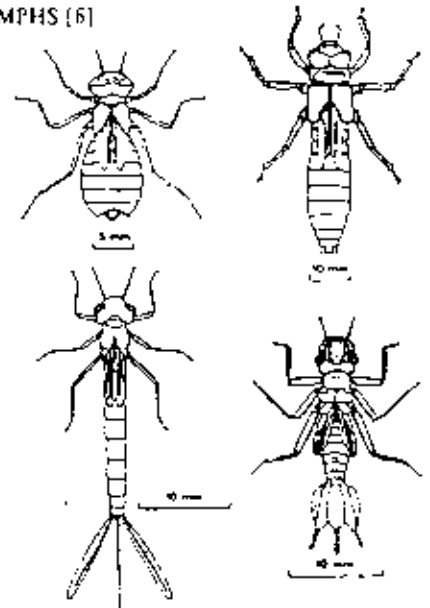
Sensitive Water Bugs



Crustacean less than 3cm long.
Flattened from side to side
Free swimming at all levels.



Small crustacean with slender legs and claws found among aquatic plants and loose stones.



Dragonfly nymphs are short, chunky predators with wingpads and internal gills. Damselfly nymphs are more slender, and have 3 tail like gills on the tail tip. Both have mouth parts and extendable jaws. They are found on plants, among stones, leaf litter or on the bottom.



Flat disc-like body. Less than 5mm long. Found swimming in water, among plants or on bottom of slowly flowing water.



A variety of different shaped free swimming crustaceans. Generally flattened up to bottom — slater like.

Worm-like insect larvae with 3 pairs of legs on the 1st three segments and possibly stumps on last segment. Some are found in cases such as in leaves, twigs, cemented stones or cone-shaped webs.



Tolerant Water Bugs



Segmented worm with a sucker on one or both ends. Found in water column, on plants in both the water and on land, or on bottom of stream.

Worm-like creatures with 2 eye spots. They move in a gliding motion. Found among loose stones.



Soft bodied animals with a coiled shell. Found on plants and on rocks.